

Put Cal's message in writing.

Colin

Rural model mo-
stand out as only
real example of
affordable housing.

City Museum
Old Customs House
Antinore House.

St. Kilda
Bodhi Forum.

Draft (1)

I am honored to be invited to say a few words in connection with this 20th Anniversary of ^{your} Dharma Center Community.

and to share with you a little of the story of why I personally, and our Bodhi Garden community as a whole, are indebted to Dharma Center for the contribution you have made to the ~~our~~ existence ^{of Buddhism} as a community.

Following the Aquarius Festival in Numbur in 1972 many of the participants at this Festival stayed on and took up residence in this area.

In 1975 a woman by the name of Ilse Handman invited an American Vipassana Meditation teacher by the name of Robert Haver, to conduct a course in Australia.

The site selected for this course was at a place called "Wangpa Falls" which is north of Glass House Mountains in Qld.

Ray, Subhana
Dudley, Carol, myself and many others from the Numbur area attended this Retreat.

This course was held in "rebel" school and at the end of the course I suggested that as there were so many students from the Nimbin area, it would be good if there was a facility suitable for meditation retreats in this area.

Dudley Leggett responded by saying that it may be possible for such a facility to be constructed on part of the Dharmapada land, but he would have to check this out with the Council.

This came to be the case and several public meetings were held in ¹⁹⁷⁶ Nimbin in 1976 to further this proposal.

Construction of the Meditation Hall, Kitchen and a Kitchen followed with the first retreat at this Centre given in ¹⁹⁷⁷ by Christopher Titman in 1977.

Here are photos of those ^{who} participated in the retreat (a display here today).

After this Retreat there were a number of students who expressed a desire to stay together, and explore the possibility of acquiring land, with ^{and a view to} living together.

One of the criteria for the selection of land was that it had to have ~~was~~ that it be within easy walking distance to the ~~Dharmacharya~~ Meditation Centre.

When the present Bodhi Farm land was discovered as being up for sale, it was appreciated that it met this and the other criteria, and so was purchased.

Hence the actions of the Dharmacharya community and the social ~~relationships~~ ^{relationships} associated with the Meditation Centre gave birth to a ~~pledge~~ ^{commitment} to Bodhi Farm.

I am among those who have a vision that the generations to come will look back on what the "social principles" of the 1970's ^{have} achieved in the formation of "cultural ^{lifestyles} communities".

On this your 30th community anniversary
 I wish, in particular, to acknowledge
 the pioneering contributions made in particular
 by Dudley & Carol ^{who purchased this land and} along with their son Adam,
~~who~~ came to settle here.

Personally (and on behalf of our Bodhi Farm
 family) I wish to convey our
 deepest appreciation for the pioneering
 contribution, made by the Horwacra
 Community in general, and to Dudley
 and Carol in particular. ^{By having the Bodhi}
 and the guests present to stand up ^{community}
 with me and express our appreciation
 of your achievements.

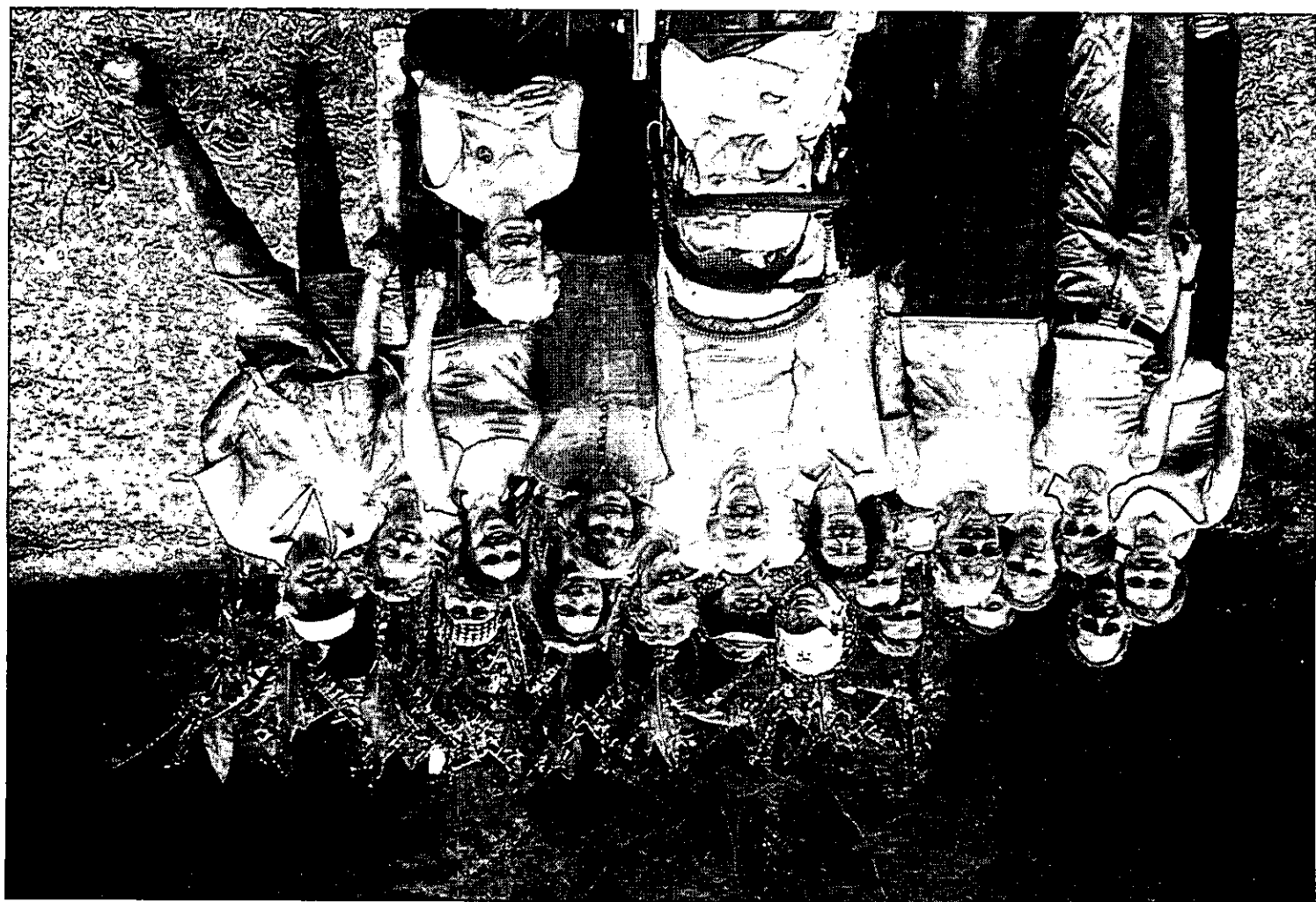
Colin James

~~my colleague & associate~~

Colin James was an instrumental figure in the selection of Newbin as the site for the Aquarium in 1973.

Colin I spoke with him recently. I think he has ~~been~~ ^{devoting} his energies to providing affordable housing for the homeless in the Syd Metropolitan area.

He has asked me to pass onto you at this celebration that he continues to rate the Multiple Occupancy legislation as standing out as the only really successful example of Affordable Housing in NSW.



COMMEMORATIVE PROGRAMME

DHARMANANDA
30TH ANNIVERSARY CELEBRATION

SATURDAY 9TH NOVEMBER 2002

TERANIA CREEK

May all beings live in peace and happiness

DHARMANANDA'S STORY

Carol, Dudley and Adam left Melbourne in 1972. They were following a dream of self-sufficient community, with sustainable systems and an extended family. The long search for suitable land ended here at Dharmananda. Early pioneering years were busy and challenging, with farming skills to be learnt, new relationships to be honed and with very few creature comforts.

Thirty years later life is much more comfortable, with a communal house, visitor and Wwoofer accommodation, workshops, dairy, meditation hall and nine homes. The fertility of the pastures has improved through organic and biodynamic practices, and steeper or inaccessible land has been reafforested. Sustainable systems for water, waste and energy have been introduced, while social systems and processes facilitate the smooth running of the whole. Dharmananda is now home to sixteen adults, four children and 30 cows. A high degree of self-sufficiency has been achieved with the garden meeting all vegetable needs, the orchards yielding fruit and nuts aplenty, and the Jersey herd supplying milk for our needs and for home made butter, yoghurt and cheeses.

Spirituality is a constant element of community life. Residents have a range of spiritual practices including Buddhist meditation. Throughout its history, Dharmananda has held regular sitting days, days of mindfulness, and contributed to the management of the Forest Meditation Centre on the property.

The spirit of the extended family is very alive and a major key is the common ownership of land. We eat evening meals together, farm and community decisions are made at weekly meetings. We roster daily chores, and work together on Fridays and Saturday mornings on larger projects. Underlying everything else is our commitment to the land, each other and the peaceful resolution of conflict.

So many people, in so many ways, have contributed to the achievements of Dharmananda community and the fulfillment of a dream. Today we say a huge Thank You to all of you.

PROGRAMME OF ACTIVITIES

2.00 pm

Write a message for Dharmananda

Farm Walks

~ 5.00 pm

Garden Tours

Produce Display

Photo Memorabilia

Tell your Dharmananda Story

(thanks to Andrew Nicholson)

Meditation Sitting

**5.15 pm Group gathering at Main House for Founders' Ritual,
Ajahn Thanasanti Reading and Kuan Yin Presentation**

6.00 ~ 8.00 pm Dinner

8.00 pm Stories of Dharmananda ~ Bobbi Allan

~ Peter Hamilton

~ Annie Bolitho

9.00 pm Party

(Thanks to Paul Joseph, and Mook and Shanto for leading us in song)

En Dudley 9-11-02

In late 71, early 72 Dudley & Carol
went to Fin Villos & stayed with
Colin Scattergood.

After staying there a while, they
with 5 others went to Dharamnada
which Dudley had purchased in
(year) — ?

Dudley & Carol went to Laos in 1973 to 4.

A super 8 ^{colour} film was made of the '72
period at Dharamnada. This has been
now transferred to video, ^{in colour} & a copy is
held by Dudley & at Dharamnada.

c/ Susan
Groban
Rhonda

Groban.

Check list of questions re association with
Doracoda. re 30th April. 2002 Nov

- How did you come to first hear about D?
- Who were your contacts at this time?
- What year did you first hear about D?
- " " " " visit D?
- Who were some of the residents at that time?
- How long did you stay on the 1st occasion?
- What was your impression of D following your first visit or stay?
- What has been your connection with D since that time?
- Did you get to stay at D as a visitor, worker, resident etc if so in what capacity and years were involved?
- If you left D what were the circumstances which brought this about?
- With hindsight what is one of your favourite memories of D?
- What was a humorous situation that arose while you were at D?
- If you now live on an K other than D what are some of the differences between the two? How far you are important or significant?

W.F.

Dudley
28/9/02

Agatha (Behind?)
Adam in lap with Dudley

Christopher T. (First Course)
- Lama Adam in 1977.

2 children + adult:

Paul Erick,

Rosie Lee - (Worked in "Echo" office; BA)

Wale?

(Now at Byron Library 66-8 58-517)

Washhouse

Original garage with earth floor & concrete wall.
Concrete floor by Dudley, closed after
stone & floor.

Kitchen with added

Water carried by buckets for years
then reticulated water added

1974 "Diamond Valley" Retreat
Near Chennai.

1975 Robert Hoyer met Subhawa

Here at Obi Obi; Tainachan at Island Ireland

Goenka said he would sponsor provided only his
approved teachers to be used (Vipassana). Dudley rejected this for
independent centre.

1976 Starting building Meditation Centre.

1977 Christopher 1st Course

c/- Dudley to record "Peace Train" project.

Contact, Larry for diaries & her photos

NB. Benny Zable's gift of Caravan.

Shawmooden 30th

8/11/02

Titmus 1st Course 1977

1975 Robert Haver - contact with Sublana, Benny Sublana

1975 Xmas Ed Winter / Don & Self Xmas

Else (at Old Obs) Manager of Haver Course

Tara taken at Island.

1976 Started building Mtd. Centre

1977 Christopher 1st Course.

cf Bodhi Greta + Mac started in 1976 (This is accurate)

Wampa Falls

John Colman 1975 in Tawantich

(m) Jeff Hayscraft. Jeff picked up Jan Safford as a hitchhiker.
0422 062-124 & web. - K. Bodhi Sam

Effortless Trading / Denise

Jeff Hayscraft had a stall at the Paddington Markets
Jeff was selling Effortless Trading products at Paddington & met

Denise

(then Kilpatrick)
Wladita had been living in Glebe & at Jeff's
suggestion moved to his place in eastern suburb,
& she stayed there for a year & half.

Wladita had acquired John Colman retreat at
Toowoomba Q.

Ernest Giles (note) I have visited the site where
the ^{Indians} people I was living with, first met Giles.
The story account of this first contact with a
white man has been passed down in their
oral record of the past - in detail showing
Giles where he & his party could obtain water
in a particular rock pool.

I - have a vision.
I am among those who have a vision.
It is a vision that the generations to come
will look back on the "social pioneers" of
the early 1970's achieved in the formation
of "intentional communities" as extended families
that whose life styles had a potential
to contribute to
aspired in part to include a higher level
of sustainability than had been experienced
in urban metropolitan areas/cities.

Carol & Dudley, both in their respective ways
continue to be trail blazers in the exploration
in the field of social sustainability.

(1) in Aust.

in a landscape where the dominant
paradigm is out of kilter with the
carrying capacity of the land to
support the prevailing economic structure
and land degradation.

the social structures ^{are} gathering over this
landscape having the potential to be
with

unprecedented in its history

It is ⁱⁿ this landscape that 100s of extended families may come to be appreciated as a model for survival

A sustainable technological adaptation that mirrors the sustainable pattern of settlement by achieved by the original people in this context for tens of thousands of years.

In this regard I commend to those concerned the recently published Keynote address by Professor Tim Flannery given at the opening of the "Spirit of Land Care" at Ballina in August last year, and (published in the Proceedings)

A copy of ^{the Proceedings of this forum} which is available through local Landcare Groups.
(Incl. contact person.)

~~It is one thing to have a vision that~~

One of these who see that the despair experienced by young people is so great that relief is sought in such acts as suicide bombing.